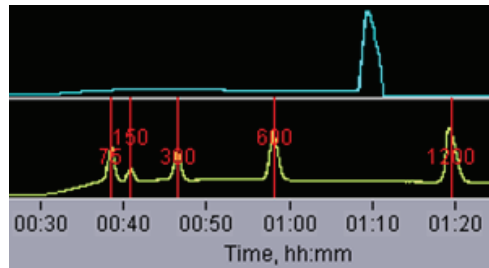
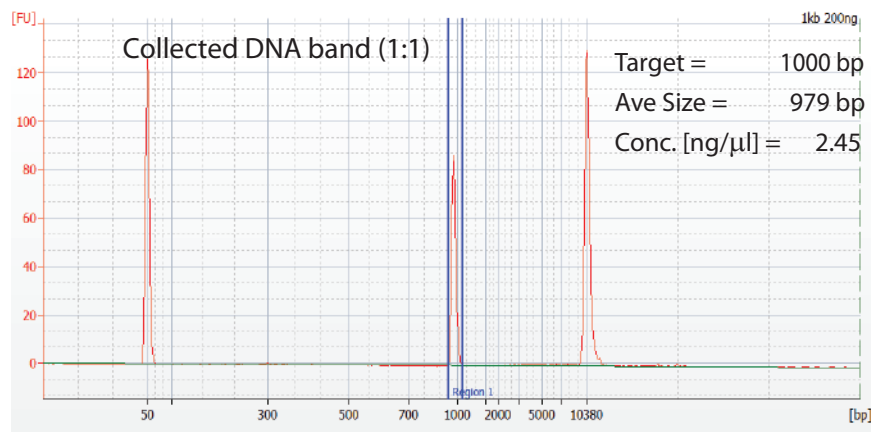
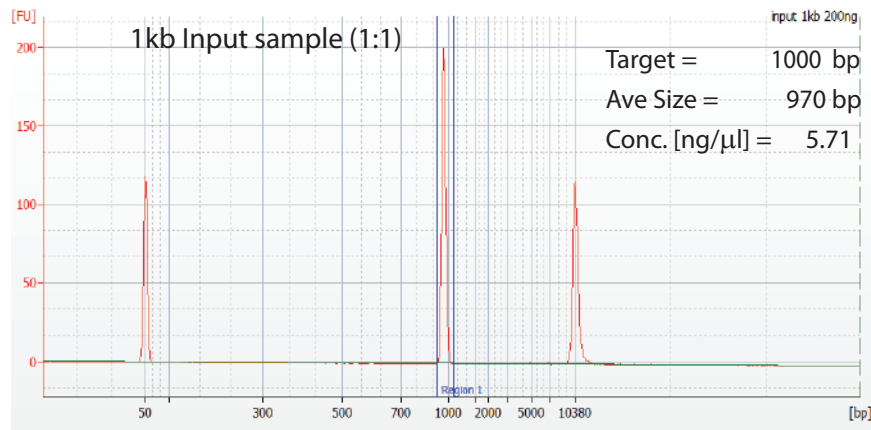


Typical Results

At the end of a run, users should observe the following optical displays in the run monitor. Marker A1 is on the bottom and input DNA is shown above.



Input and sample collections are run on an Agilent Bioanalyzer using a DNA 1000 chip. The analysis volume is 1 μ l from a 40 μ l elution volume (1:40 dilution). The figures below show typical results.



* These data are not intended to imply guaranteed results or performance. This product is intended to demonstrate that the Pippin product is functioning as expected, and that proper operational technique is being used. Users should refer to the Operations Manual for performance specifications.

© 2012 Sage Science, Inc. Pippin Prep and BluePippin are trademarks of Sage Science, Inc.

Control DNA

For Validation of 1.5% Gel Cassettes
for Band Capture with Midori Green Dye

collects DNA bands between 250 bp - 1.5 kb

Item# CBC1501

For:

BluePippin™
BSG1510 Gel Cassettes

1.5% Band Capture 250 – 1500 bp Marker A1



sage science

Suite 3150, 500 Cummings Center
Beverly, MA 01915
support@sagescience.com
978.922.1834