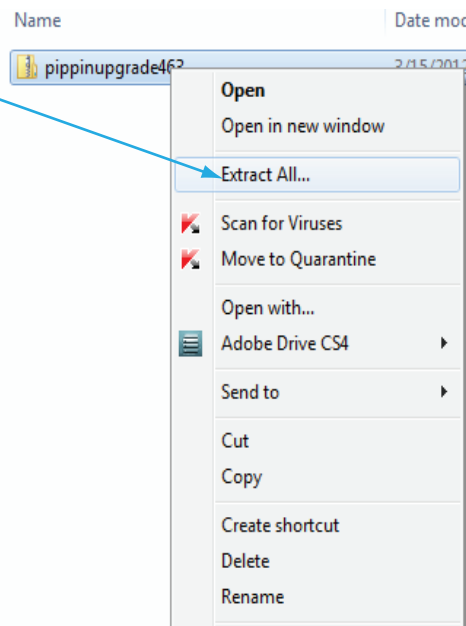
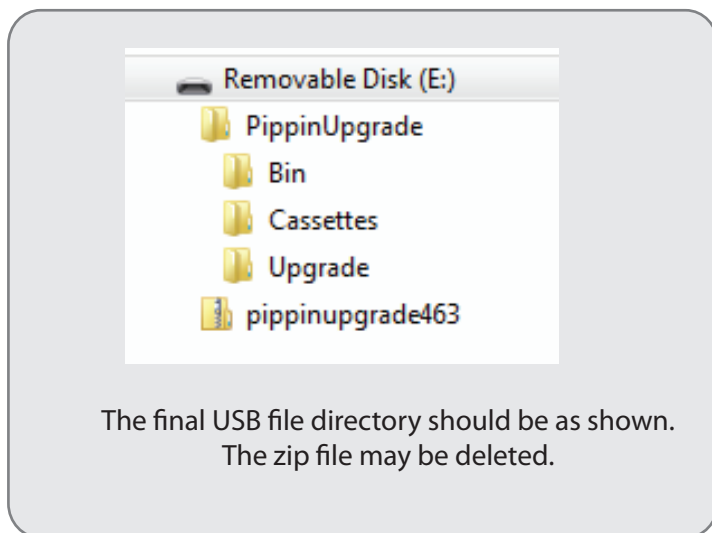


Pippin DNA Size Selection

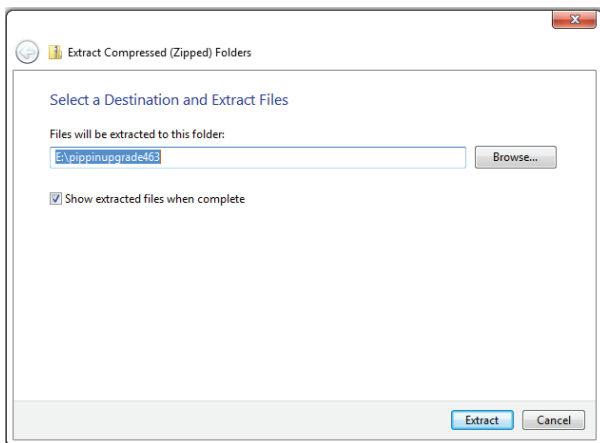
Extracting the file to a USB flash drive

Pippin upgrade software is available for download at www.sagescience.com/support/. The files are provided in a zip file, and the contents must be extracted to the root directory of a USB flash drive:

1. Download the Software Upgrade package by pressing the appropriate link on www.sagescience.com/support/ (in the Downloads section, under "Software")
2. Press "Save File" when prompted. The zip file will likely save to a "Downloads" folder on your computer. The file will be named *pippinupgrade[version number].zip*.
3. Copy the zip file to a USB drive. Make sure the file is transferred to the root directory and not placed within a folder.
4. Right-click on the zip file, and select "Extract All...."

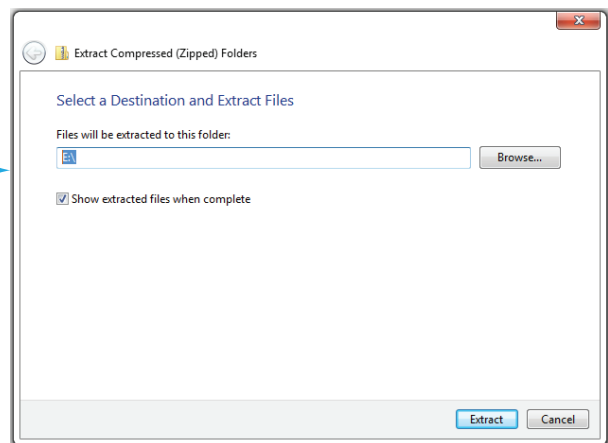


5. A window which will launch to prompt you to select a destination where to extract files. The prompt will suggest creating folder based on the zip file name. Delete the destination folder name, so that only the root directory appears (E:\ in the example below)



Files will be extracted to this folder:
E:\pippinupgrade463

not correct



Files will be extracted to this folder:
E:\

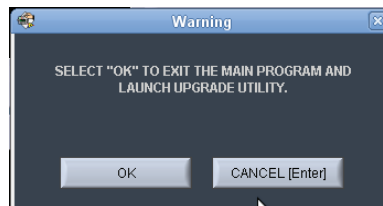
correct

Upgrading Pippin Instrument Software

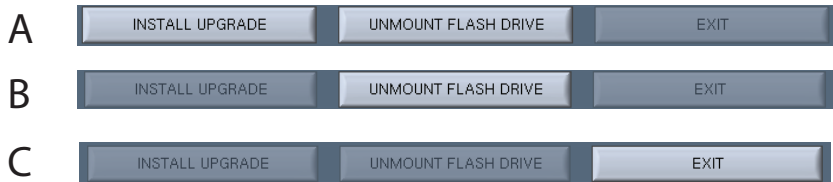
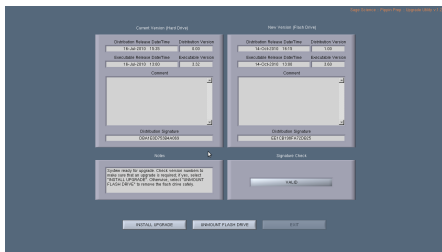
1. Insert the USB drive with the upgrade folder into the USB port on the front panel of Pippin instrument.
2. From the Main Tab, Press "INFO". This will open the Information window.



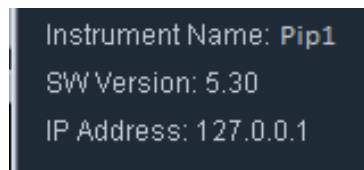
3. From the Information Window, press "SOFTWARE UPGRADE", press "OK" at the warning prompt. This will open the Software Upgrade window.



5. From the Software Upgrade Window press the following:
 - A. "INSTALL UPGRADE" - this will take about several seconds
 - B. "UNMOUNT FLASH DRIVE" and remove the USB flash drive.
 - C. "EXIT" to return to Main Menu - the software upgrade will intall. This may take up to 30 seconds



6. To check that the software instrument has been update, Press "INFO" again. In the Information window, the softwareversion number is listed on the left side.



Sage Science, Inc.
Suite 3150
500 Cummings Center
Beverly, MA 01915
support@sagescience.com
888.744.2244 (U.S)
978.922.1832 (outside North America)