

Software Update Instructions

For the BluePippin and Pippin Prep Systems

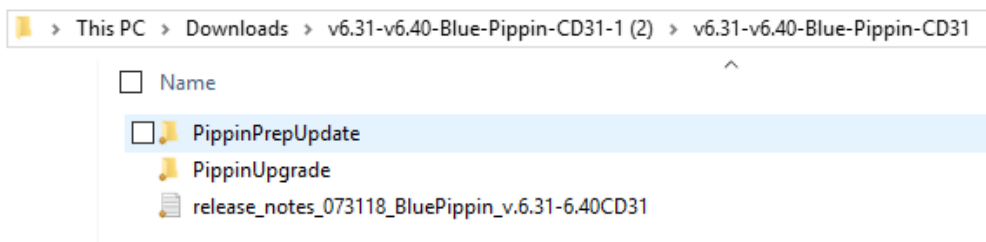
Extracting the file to a USB flash drive

Pippin upgrade software is available for download at www.sagescience.com/support/. The files are provided in a zip file, and the contents must be extracted to the root directory of a USB flash drive:

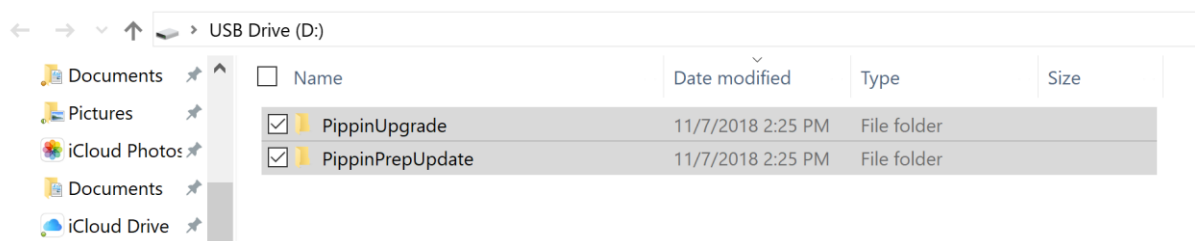
1. Download the Software Upgrade package by pressing the appropriate link on www.sagescience.com/support/ (in the Downloads section, under “Software”).
2. Press “Save File” when prompted. The zip file will likely save to a “Downloads” folder on your computer. The file will be named `[version number]-[instrument]-CD[cassette definition version].zip` (eg. v6.31-6.40-Blue-Pippin-CD31).



3. Unzip its contents onto your computer. It should contain **two** Folders: 1) “PippinPrepUpdate” and 2) PippinUpgrade (and a release notes .txt file). For instructions on extracting folders from a .zip file, click [here](#).

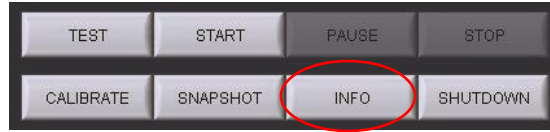


4. **Both folders** must be copied to the **root directory** of a USB thumb drive (the release notes file can be transferred or left on the PC)

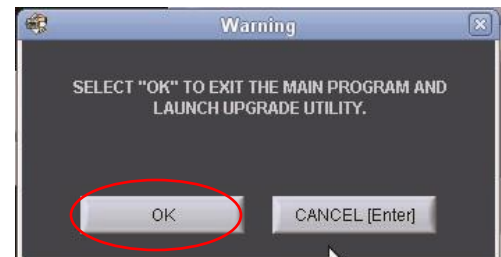
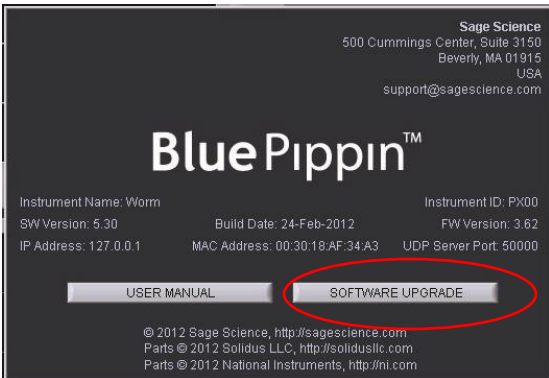


Upgrading Pippin Instrument Software

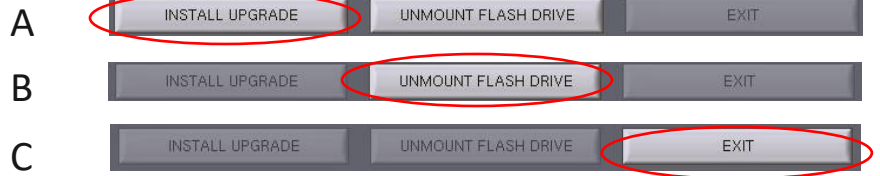
1. Insert the USB drive with the upgrade folder into the USB port on the front panel of Pippin instrument.
2. From the Main Tab, Press "INFO". This will open the Information window.



3. From the Information Window, press "SOFTWARE UPGRADE", press "OK" at the warning prompt. This will open the Software Upgrade window. Press OK.



5. From the Software Upgrade Window press the following:
 - A. "INSTALL UPGRADE" - this will take about several seconds
 - B. "UNMOUNT FLASH DRIVE" and remove the USB flash drive.
 - C. "EXIT" to return to Main Menu - the software upgrade will install. This may take up to 30 seconds



6. To check that the software instrument has been updated, Press "INFO" again. In the Information window, the software version number is listed on the left side.

Sage Science, Inc.
 Suite 2400
 500 Cummings Center Beverly, MA 01915
 support@sagescience.com
 888.744.2244 (U.S)
 978.922.1832 (outside North America)

